

307/8 Shout Ridge Lindfield, NSW



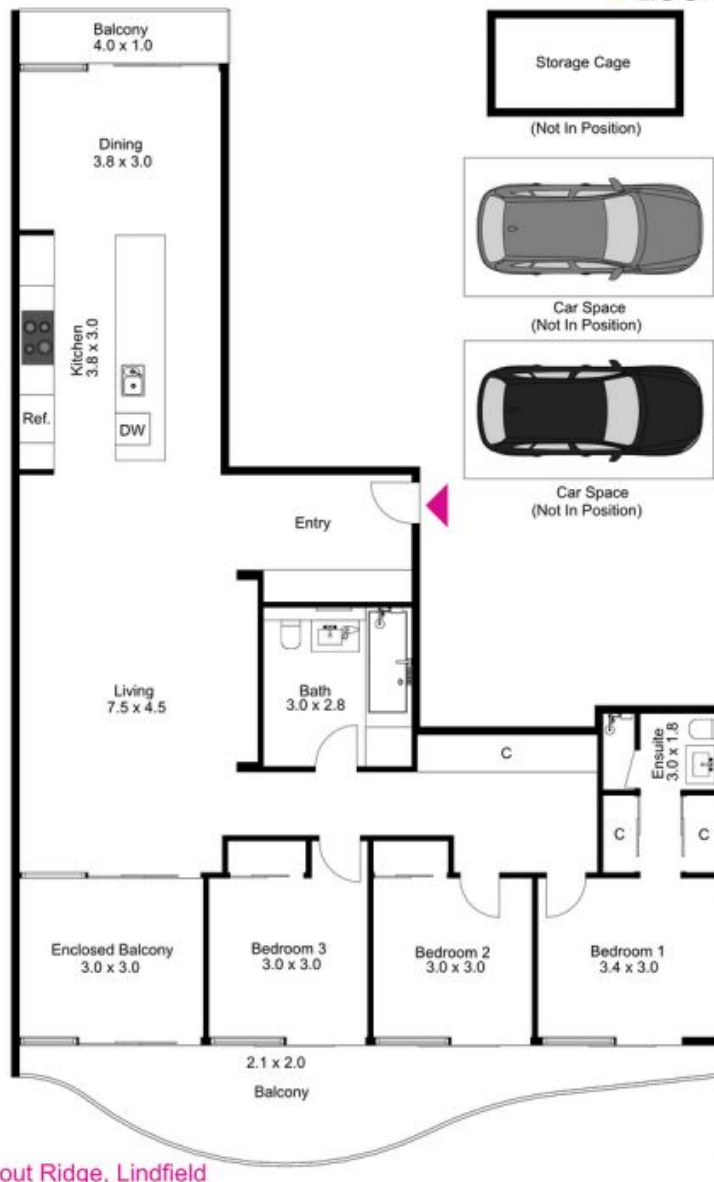
Modern Apartment, Natural Setting

A stunning light-filled and airy 3-bedroom apartment in the sought after Shout Ridge development. This unit is positioned amongst the beautiful bush of Lindfield close to the old UTS Kuring-gai Campus and just minutes walk to the brand new Lindfield Learning Village primary school. Located on the 3rd floor of a secure complex and with two balconies you are sure to have a superb outlook. The unit is modern, and in very new condition being just over 2 years old.

The unit includes:

- Unique enclosed sunroom, called the Winter Garden
- Built-In wardrobes in two bedrooms and a walk through robe in the main bedroom
- Ducted Air-conditioning and Ceiling fans
- Dishwasher

Krystal Marshall



307/8 Shout Ridge, Lindfield

The floor plan is not to scale, measurements are indicative and in metres. Exterior elements are not in position. Plans should not be relied on. Interested parties should make and rely on their own enquiries.

Produced by **DIAKRIT**