



10/15-19 Ethel Street Eastwood, NSW



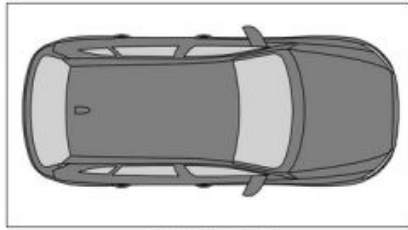
In the Heart of Eastwood

This 2 bedroom unit is just 200 metres walk to shops, restaurants and Eastwood Train station.

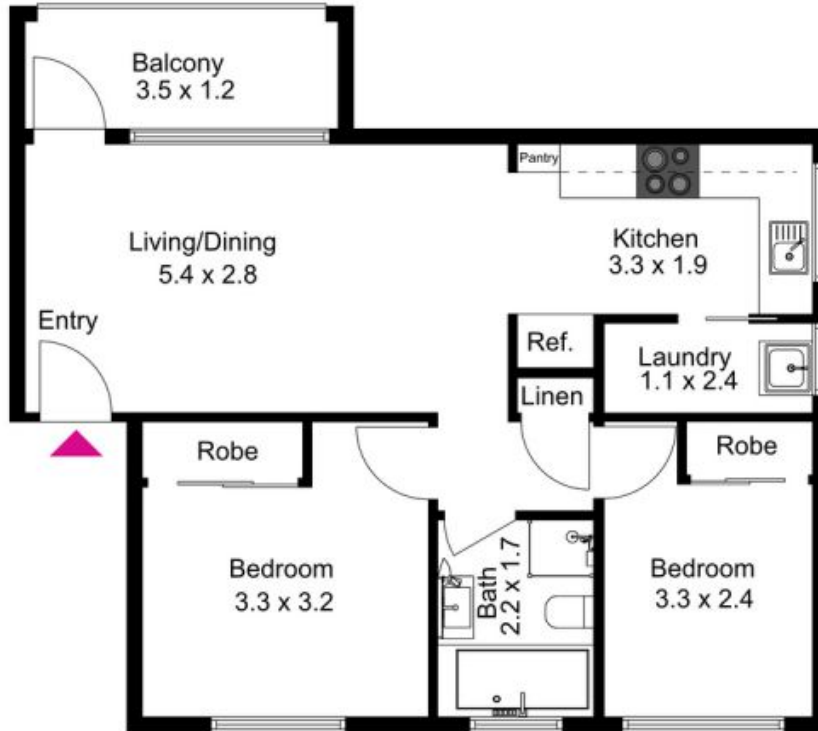
It's a neat and tidy unit with newly refreshed carpet and paint. Being middle floor with a balcony facing north, means its bright and airy all day long. Other features include:

- + 2 bedrooms both with built-in wardrobes
- + Modern and clean kitchen
- + Recently updated bathroom
- + Internal laundry
- + Balcony
- + Good size lock up garage perfect for extra storage

Krystal Marshall



Car Space
(Not In Position)



10/15 Ethel Street, Eastwood

The floor plan is not to scale, measurements are indicative and in metres. Exterior elements are not in position. Plans should not be relied on. Interested parties should make and rely on their own enquiries.

Produced by **DIAKRIT**