

16/700 Victoria Road Ryde, NSW

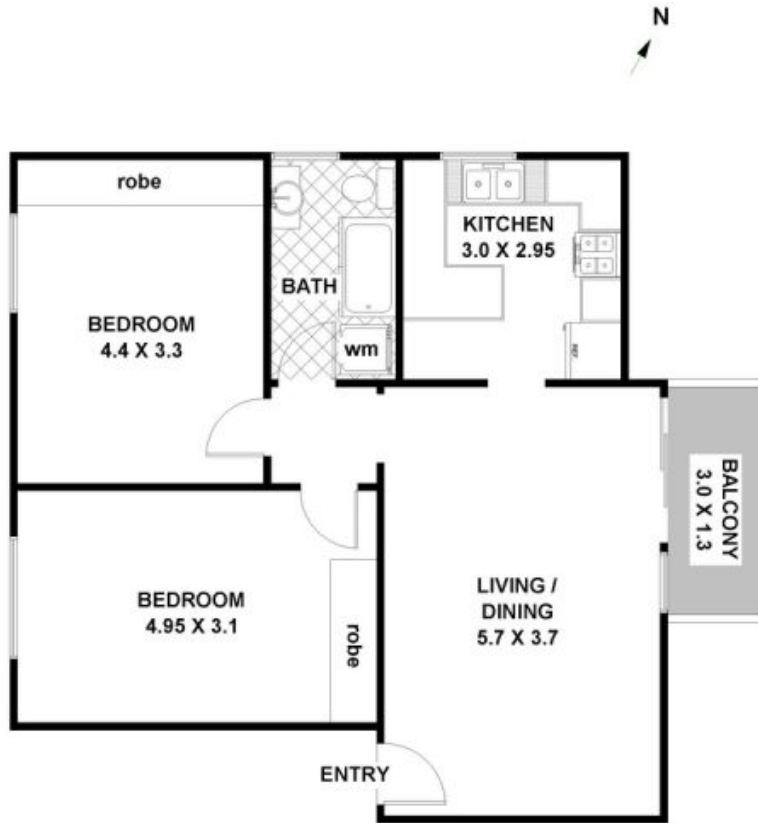


Bright & spacious updated unit with 2 large bedrooms both with built-in wardrobe

- + Approximately a 10 minute walk to Top Ryde City & amenities
- + Freshly painted throughout
- + Two overly large bedrooms both with built-ins
- + New carpet throughout
- + Balcony off the spacious combined living area
- + Kitchen features plenty of cupboard space & storage
- + Gas Cooking
- + Sleek bathroom with shower over bath
- + Laundry facilities in bathroom
- + Open carspace labelled D
- + Bus stops to the City are conveniently scattered along Victoria Road

JR Leasing

16 / 700 Victoria Road, RYDE



FLOOR PLAN: All dimensions and layout are approximate only.
No guarantee or liability will be accepted for reliance placed on it.