



9/2-6 William Street RYDE, NSW

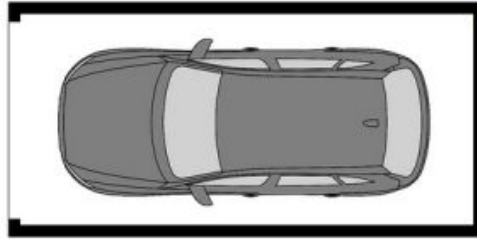


Bright unit close to shops

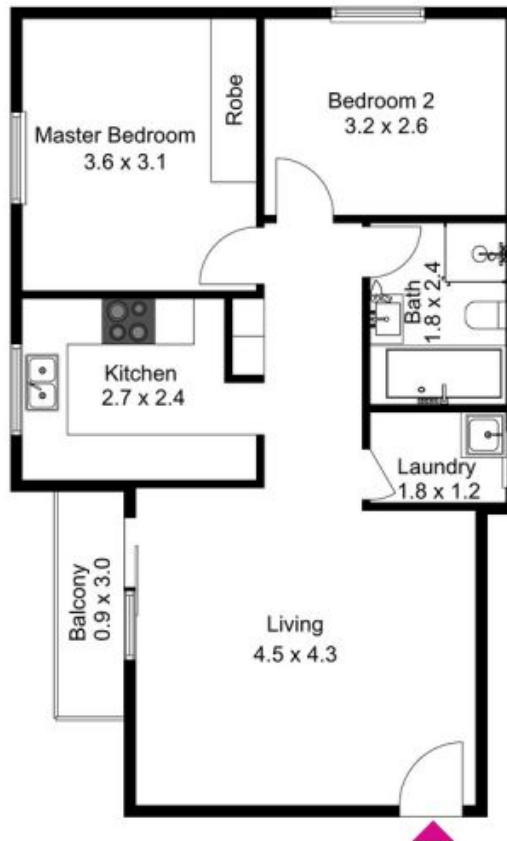
- + Good size bedroom with built-in wardrobe in main
- + Near new paint
- + Near new carpet
- + Neat & tidy kitchen
- + Combined lounge/dining
- + Balcony off lounge room
- + Internal laundry
- + Lock-up garage No.9
- + Top floor
- + Walking distance to Top Ryde Shopping Centre & buses

Rent by Negotiation \$400-\$420

JR Leasing



Garage
6.0 x 2.8
(Not In Position)



9/2-6 William Street, Ryde

The floor plan is not to scale; measurements are indicative and in metres. Exterior elements are not in position. Plans should not be relied on. Interested parties should make and rely on their own enquiries.

Produced by **DIAKRIT**