

9/6 Isabel Street Ryde, NSW



Extremely convenient location, short walk to Top Ryde Shopping Centre & buses

- + Two bedroom unit
- + Built-in wardrobe to main bedroom
- + Electric cooking
- + Combined lounge & dining area
- + Shared coin operated laundry
- + Carport no. 9

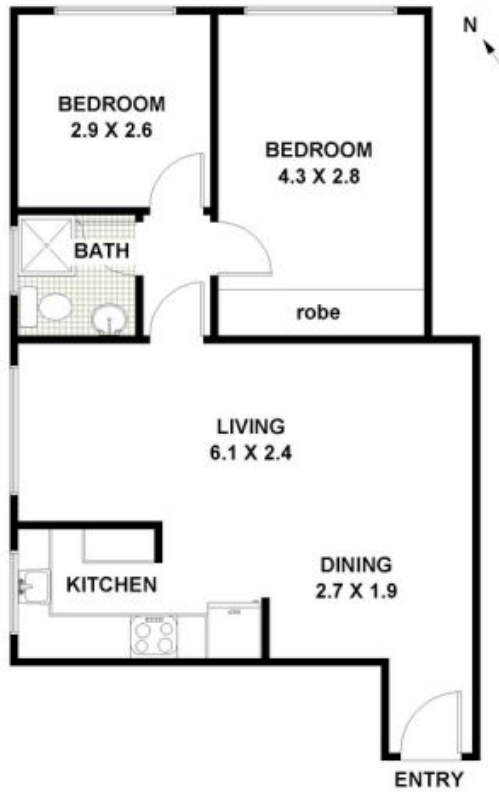
Extremely convenient location, short walk to Top Ryde Shopping Centre & buses

Don't miss the open inspection - come & see all of the features that could tick the boxes on your wish list!

Rent by Negotiation \$350-\$390

JR Leasing

9/ 6 Isabel Street, RYDE



FLOOR PLAN: All dimensions and layout are approximate only.
No guarantee or liability will be accepted for reliance placed on it.