



7/226-228 Blaxland Road Ryde, NSW



North West facing apartment in the heart of Ryde

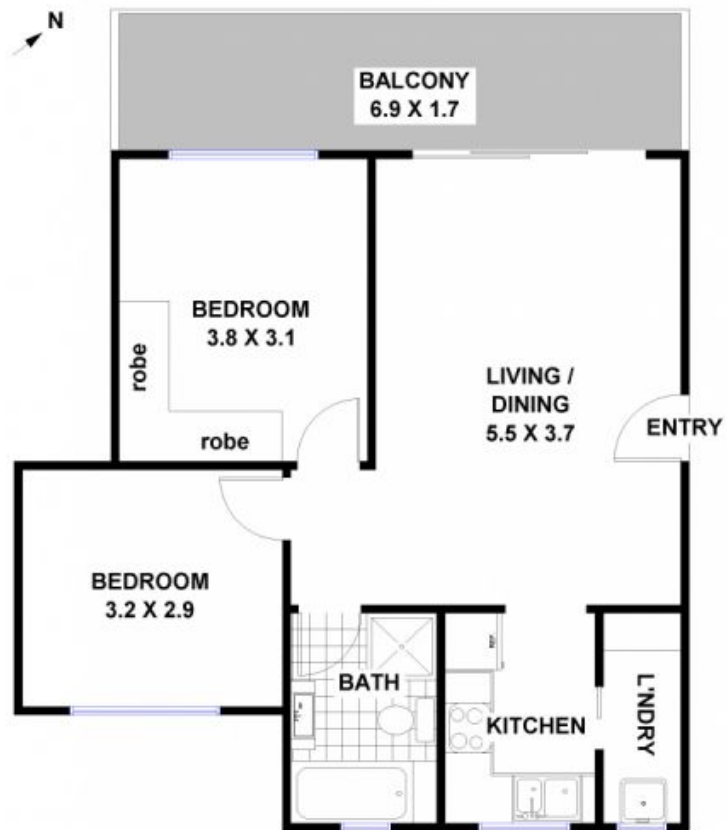
Enjoy the afternoon sun in the living room or balcony whilst staring out to the distant views & relax in your own quiet & safe haven

- + Large living room leading out to a spacious balcony
- + Located on the top floor & midway through the block away from the main road
- + Two large bedrooms, main with a double size built-in wardrobe
- + Neat & tidy timber kitchen with ceramic electric cooktop
- + Stylish bathroom with a seperate bath & shower
- + Undercover car space no. 7
- + Internal laundry
- + A short walk from Top Ryde Shopping Centre & City buses

\$380 Per Week

JR Leasing

7 / 226 Blaxland Road, Ryde



FLOOR PLAN: All dimensions and layout are approximate only.
No guarantee or liability will be accepted for reliance placed on it.