



107/101-103 Church Street Ryde, NSW



Brand new 1 bedroom apartment!

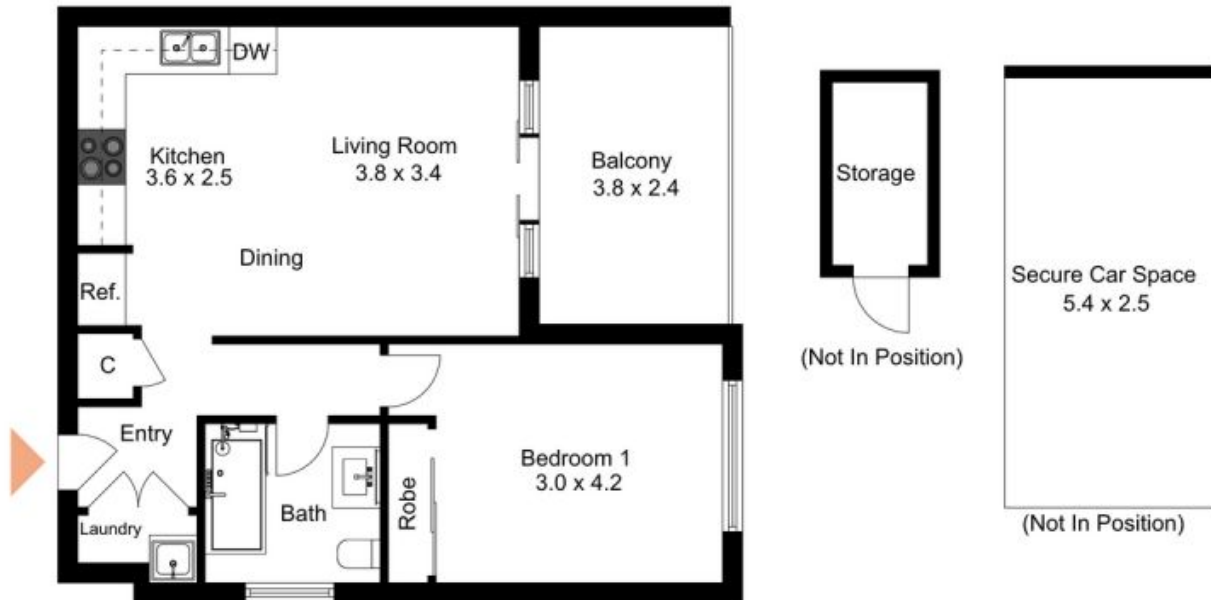
TO BOOK A PRIVATE INSPECTION PLEASE CALL ELISMA ON 0422462010

This apartment, located on the corner of Junction and Church Street, is just a few minutes from Top Ryde Shopping Centre, Meadowbank Ferry Wharf and train. The apartment is filled with light and offering great privacy and water views via the rooftop.

Property features:

- Low maintenance and easy lifestyle living
- Timber floors throughout
- Open plan living and dining
- 40mm stone benchtops
- Miele gas cooktop, oven & dishwasher

Krystal Marshall



107/101 Church Street, Ryde

The floor plan is not to scale; measurements are indicative and in metres. Exterior elements are not in position. Plans should not be relied on. Interested parties should make and rely on their own enquiries.

Produced by **DIAKRIT**