



9/523 Victoria Road Ryde, NSW



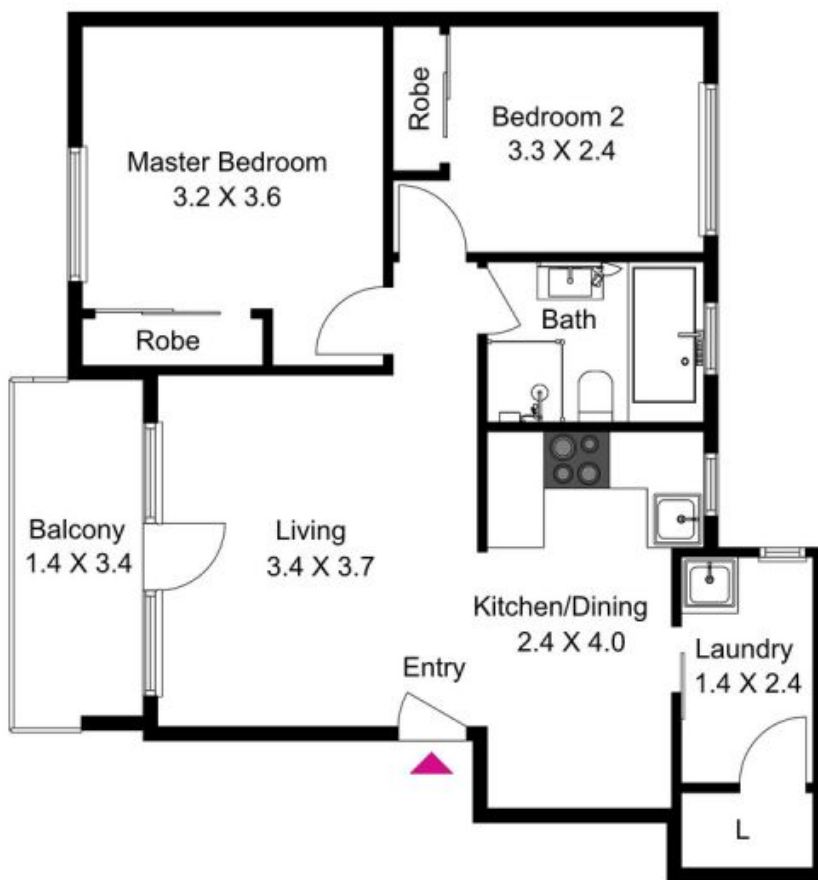
You don't want to miss out on this updated 2 bedroom unit!

To find out how your furniture would fit & to play with the floorplan, please copy & paste this link! <https://cdn.diakrit.com/product/furnish/6855411>

- + Modern kitchen with dining area
- + Built-in wardrobes in both bedrooms
- + Bathroom with separate bath & shower
- + Internal laundry
- + Balcony off lounge room
- + Under cover parking - car space No.9 entry off Cressy Road
- + Mid floor position facing away from Victoria Road
- + Security block

\$365 Per Week

JR Leasing



9/523 Victoria Road, Ryde



The floor plan is not to scale; measurements are indicative and in metres. Exterior elements are not in position. Plans should not be relied on. Interested parties should make and rely on their own enquiries.

Produced by DIAKRIT