



13/8D Goulding Road Ryde, NSW



Spacious 64.1sqm one-bedroom apartment!

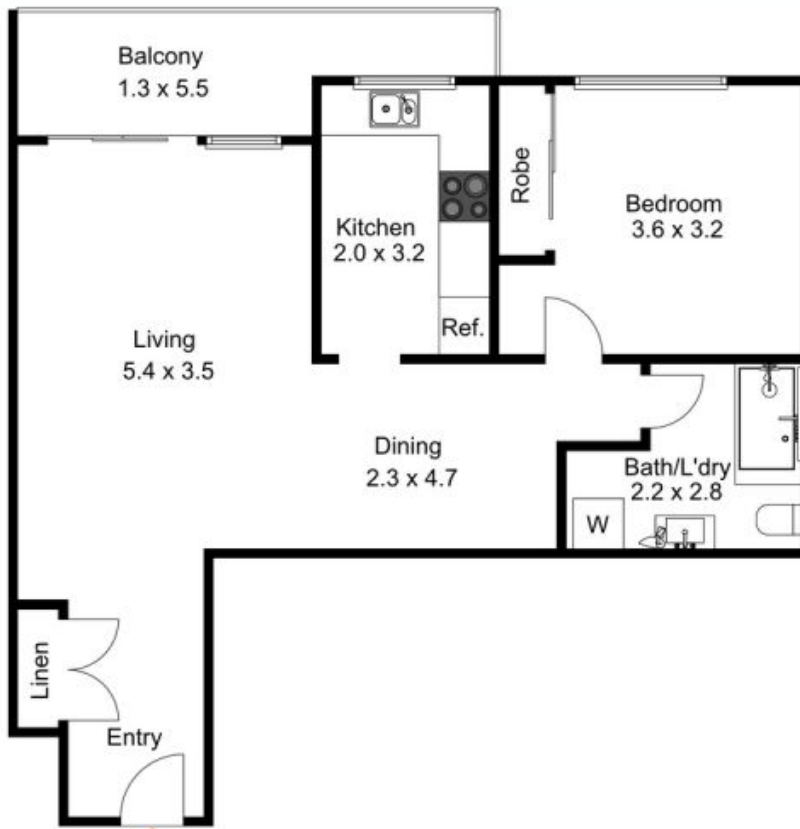
This is one of the largest one-bedroom apartments in a secure double brick build that I have seen in a while. With an open living dining area that leads onto a sun drenched balcony with leafy outlook. The bedroom has a built-in wardrobe and the bathroom is spacious and comes with laundry facilities. This unit is the perfect first home buy for a professional or a savvy investor.

Perfectly positioned, only a 3-minute drive to Top Ryde Shopping Centre, restaurants and parks, 8-minute drive to Macquarie Shopping Centre, Train Station and University. There are buses that run from right out the front of the block.

Features include:

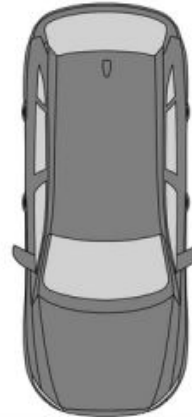
- Security building
- Top floor position

Krystal Marshall



JacksonRowe

Car Space
(Allocated By
Strata By-Laws)



(Not In Position)



13/8 Goulding Road, Ryde

The floor plan is not to scale; measurements are indicative and in metres. Exterior elements are not in position. Plans should not be relied on. Interested parties should make and rely on their own enquiries.

Produced by **DIAKRIT**

JacksonRowe

13/8D Goulding Road

Ryde, NSW