



7/224 Blaxland Road Ryde, NSW



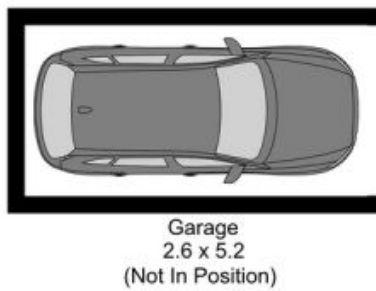
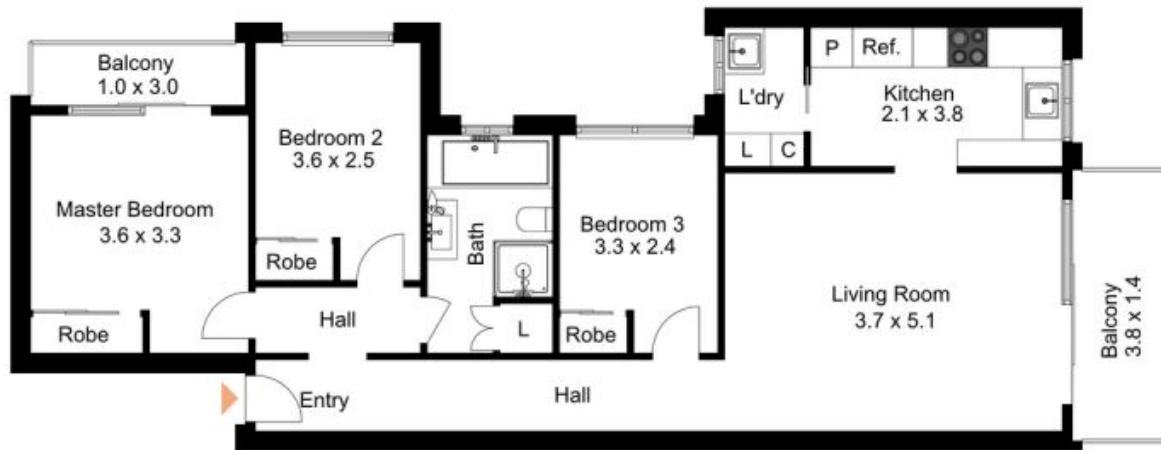
### Three bedroom unit close to Top Ryde Shops!

Features include:

- Lock-up garage
- Additional storage area
- Three bedrooms with built-in wardrobes
- Internal laundry
- Ground floor position
- Double brick complex
- Open living and dining
- Convenient location
- Two balconies
- High ceilings

Rates:

**Krystal Marshall**



7/224 Blaxland Road, Ryde

The floor plan is not to scale; measurements are indicative and in metres. Exterior elements are not in position. Plans should not be relied on. Interested parties should make and rely on their own enquiries.

Produced by **DIAKRIT**