

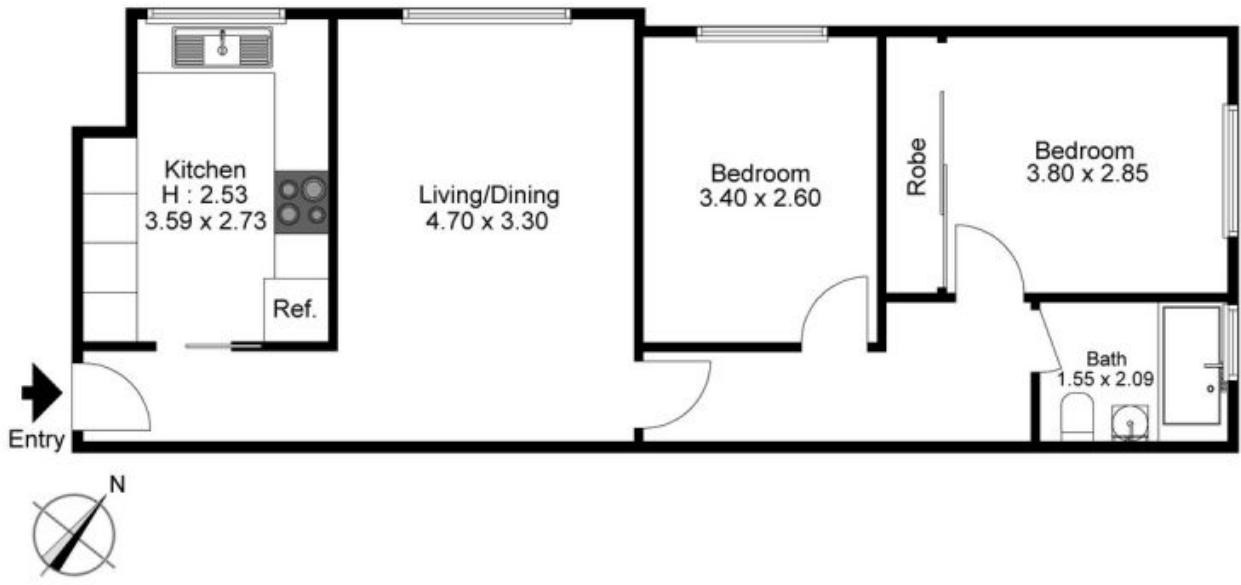
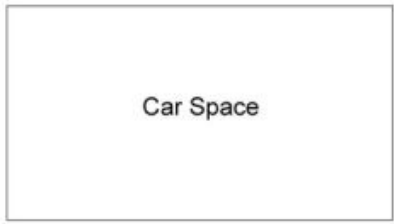
2/90 Station Street West Ryde, NSW



## Updated & bright, two bedroom unit in the heart of Meadowbank

- + Elevated ground floor two bedroom unit
- + Built-in wardrobe featured in main bedroom
- + Security block with intercom
- + Stylish carpet & near new paint throughout
- + Updated neat & tidy bathroom with shower over bath - now with white tiles for that fresh look
- + Bright & sunny combined lounge & dining area
- + Modern kitchen with plenty of storage space - now with black flooring (different to photos)
- + Laundry facilities in kitchen
- + Car space no. 2 - located at the back of block
- + Excellent location & within walking distance to Meadowbank station & shops

**JR Leasing**



This floorplan is indicative and the scale is an approximate. Scale in metres.

Produced by DIAKRIT

2/90 Station Street

West Ryde, NSW

**Jackson**Rowe