



2/6 Adelaide Street West Ryde, NSW



Updated two bedroom unit, close to local shops & transport!

HOW TO INSPECT:

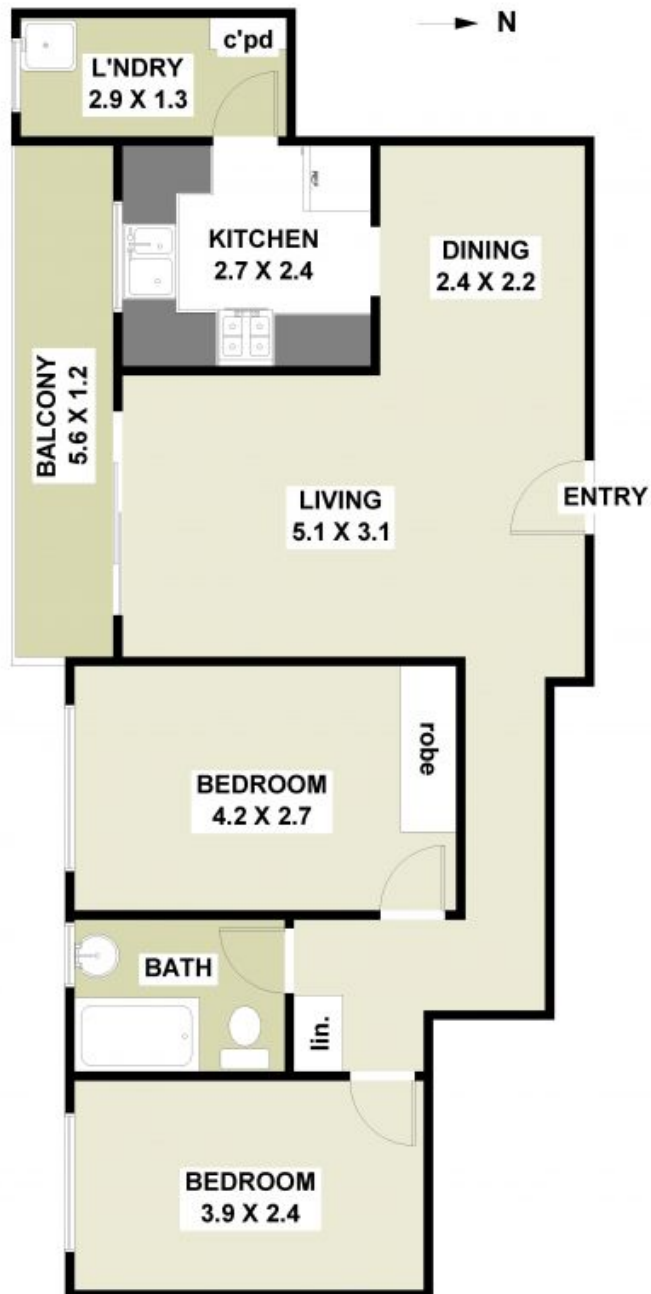
To arrange a MIDWEEK private inspection, please contact Jackson Rowe on 8878-1900

Please ensure you register for any mid week or weekend inspections so you are kept up to date with any changes to inspection times. To do this please click on 'Book an Inspection'

- + Large kitchen with plenty of cupboard space & gas cooking
- + Built-in wardrobe in main bedroom
- + Generous size L-shaped lounge/dining
- + Bathroom with shower over bath
- + Elevated first floor

JR Leasing

2 / 6 Adelaide Street WEST RYDE



FLOOR PLAN
ALL DIMENSIONS AND LAYOUT ARE APPROXIMATE ONLY.
NO GUARANTEE OR LIABILITY WILL BE ACCEPTED FOR
RELIANCE PLACED ON IT.

JacksonRowe