



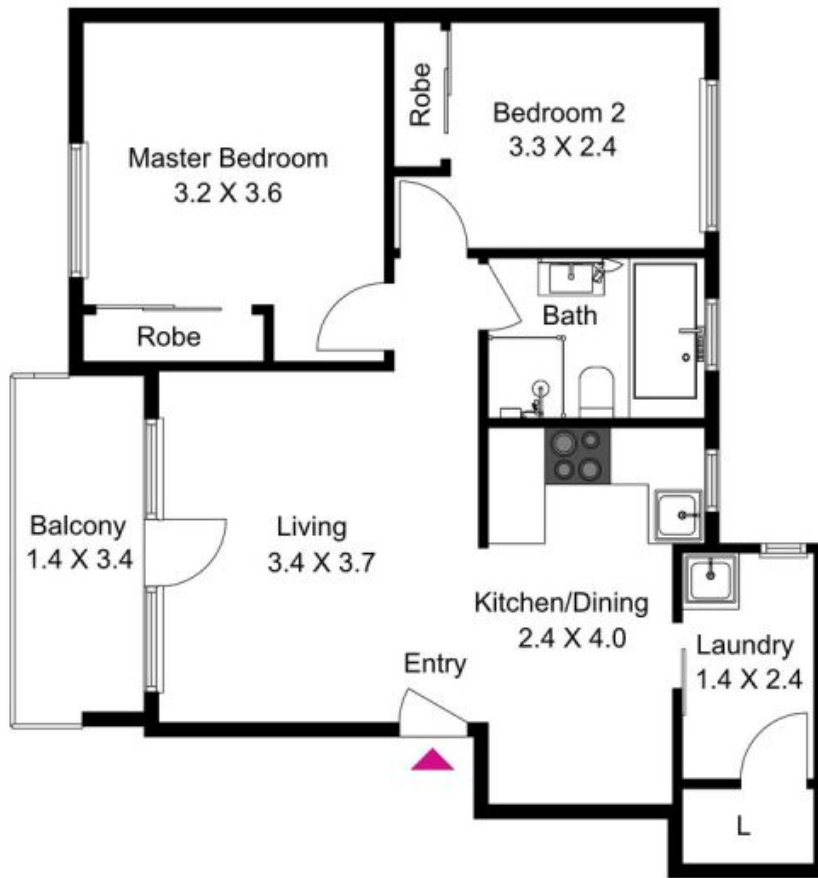
9/523 Victoria Road RYDE, NSW



**You don't want to miss out on this convenient 2 bedroom unit!**

- ? Modern kitchen with dining area
- ? Built-in wardrobes in both bedrooms
- ? Bathroom with separate bath & shower
- ? Internal laundry
- ? Balcony off lounge room
- ? Under cover parking - car space No.9 entry off Cressy Road
- ? Mid floor position facing away from Victoria Road
- ? Security block
- ? Ideal location, City bus at your doorstep & short drive to Top Ryde Shopping Centre
- ? Sorry, no pets

**JR Leasing**



9/523 Victoria Road, Ryde



The floor plan is not to scale; measurements are indicative and in metres. Exterior elements are not in position. Plans should not be relied on. Interested parties should make and rely on their own enquiries.

Produced by DIAKRIT