



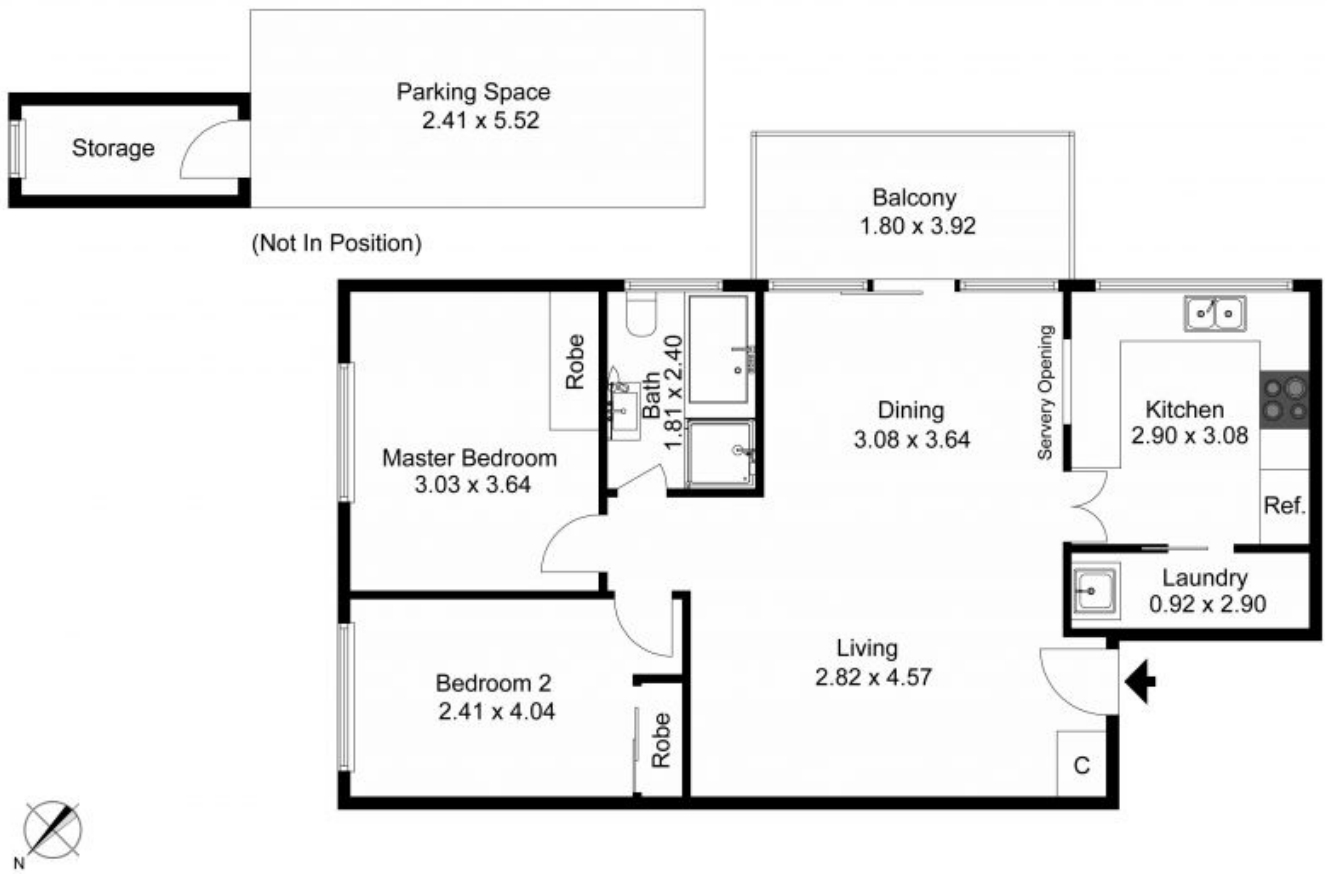
6/9-11 Lane Cove Road RYDE, NSW



Spacious modern two bedroom unit in security block

- ? Two bedroom unit both with built in robes
- ? Large lounge/dining area
- ? The balcony faces South East towards Smith Street and offers a quiet place to sit and unwind without being overlooked by neighbours.
- ? Internal laundry
- ? Large modern kitchen
- ? Secure under cover car space
- ? Own Store room
- ? Updated bathroom with separate bath

JR Leasing



The floor plan is not to scale; measurements are indicative and in metres. Exterior elements are not in position. Plans should not be relied on. Interested parties should make and rely on their own enquiries.

Produced by DIAKRIT

JacksonRowe

6/9-11 Lane Cove Road

RYDE, NSW