

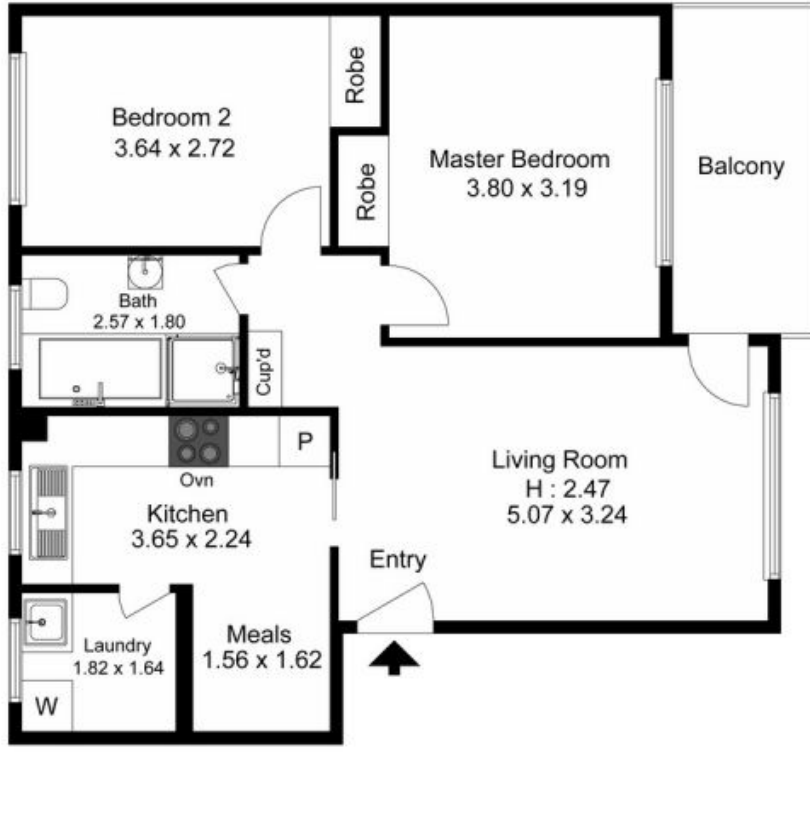
2/8 Isabel Street RYDE, NSW



This first floor two bedroom unit has been updated & is in great condition

- ? Spacious living area
- ? Large eat-in kitchen with room for a table
- ? Built-in wardrobes in both bedrooms
- ? Updated bathroom with separate bath & shower
- ? Internal laundry
- ? Large balcony off lounge area
- ? Single car space no 2
- ? Plenty of storage in unit
- ? Close to bus stops with buses going into Parramatta, Macquarie University & the City

JR Leasing



This floorplan is indicative and the scale is an approximate. Scale in metres.

Produced by DIAKRIT