



4/271 Blaxland Road RYDE, NSW



Sold

This little one-bedroom unit is the last part of a deceased estate and is priced to sell.

It has always been an easy unit to rent with long-term tenancy and constant rent returns.

- ? 1 bedroom
- ? Combined lounge dining
- ? Undercover parking
- ? Shared laundry
- ? Balcony
- ? North-facing unit and away from the main road
- ? Top Ryde Shopping Centre - 650metres
- ? Current tenant is on an expired lease

Close proximity to restaurants, specialty shops and public transport bus services to Sydney

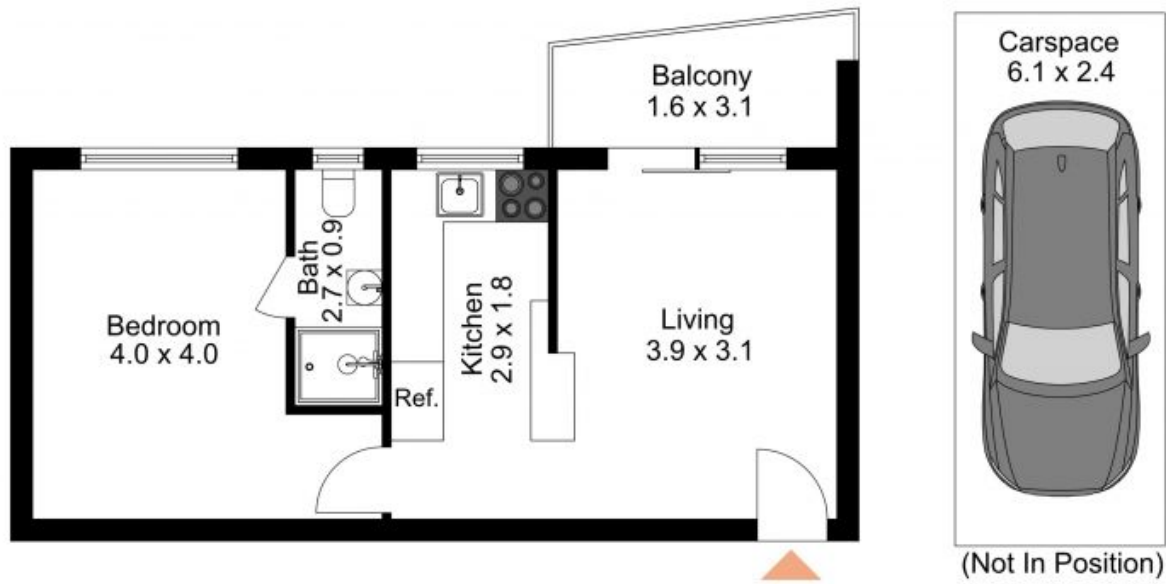
Council Rates: \$1,260.00/year (approx)

Water Rates: \$628.00/year (approx)

Strata Rates: \$854.20 p/q

Stephen Jackson

0417211330



4/271 Blaxland Road, Ryde

The floor plan is not to scale; measurements are indicative and in metres. Exterior elements are not in position. Plans should not be relied on. Interested parties should make and rely on their own enquiries.

Produced by **DIAKRIT**