



38 Potts Street RYDE, NSW



### This old home was SOLD at Auction

The early-century brick home has seen better days, but the location is excellent.

- ? Corner of Potts Street and Tyagarah Road
- ? 537.5 square metres of land
- ? 12.65-metre frontage
- ? Fantastic location
- ? Easy walk to Ryde Aquatic Centre and tennis courts

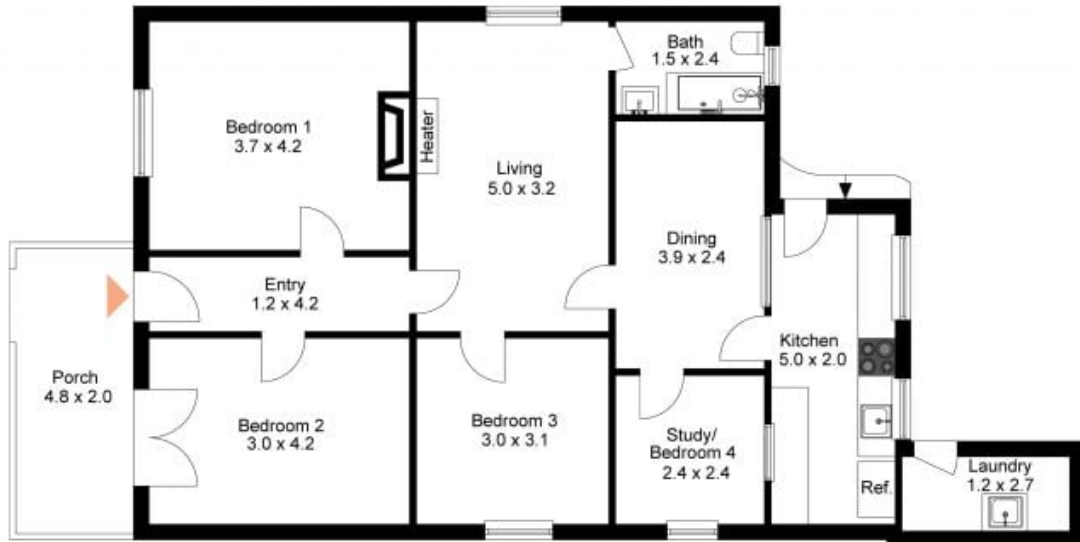
Our clients are serious about selling, so if you want a block of land to build your new home, this might be it. Any plans are subject to Council Approvals.

**Stephen Jackson**

0417211330



Site Plan



38 Potts St, Ryde

The site plan and floor plan are not to scale, measurements are indicative and in metres. Bushes and trees are placed for illustration purposes. Plans should not be relied on. Interested parties should make and rely on their own enquiries.

Produced by DIAKRIT